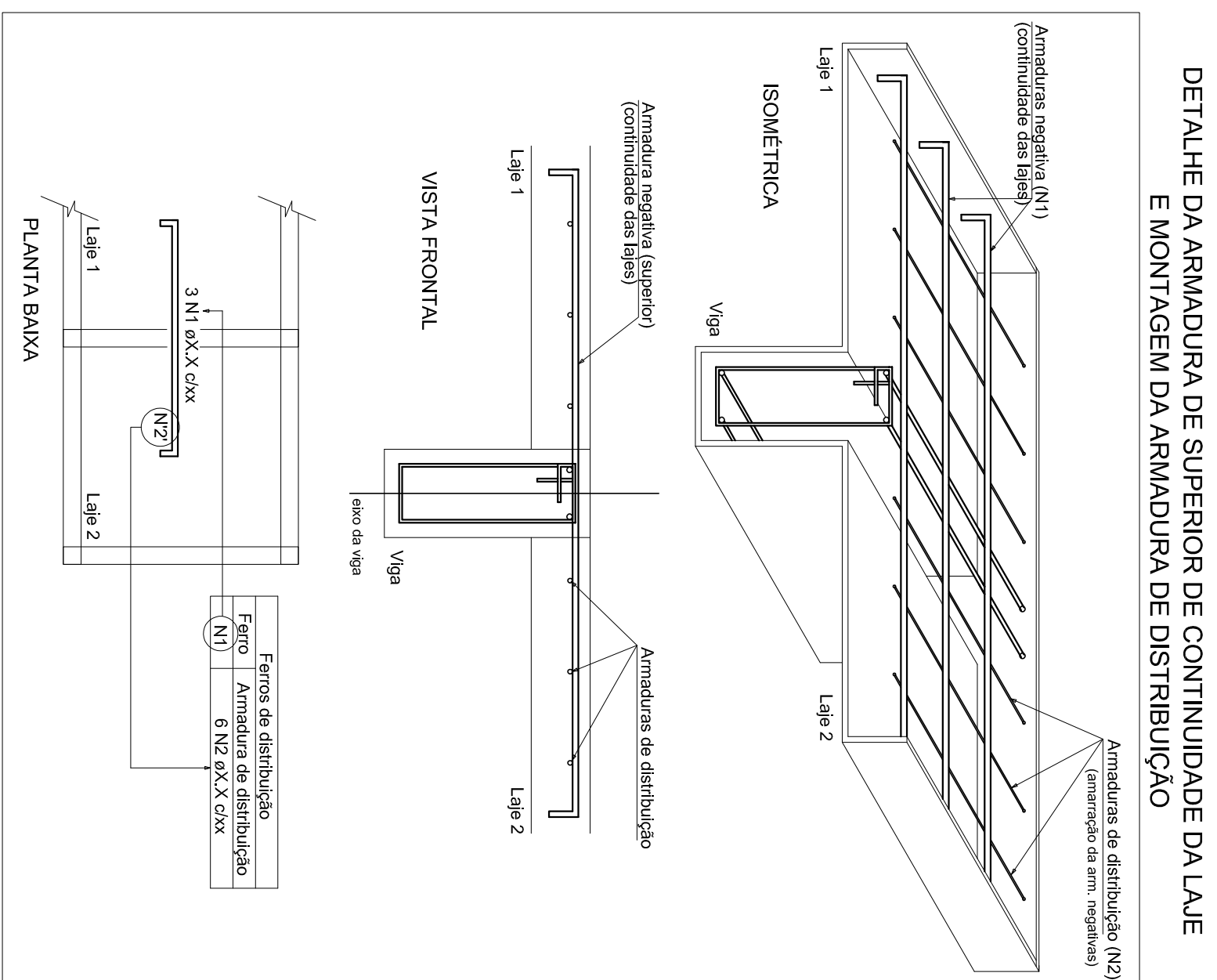


	Ferros de distribuição
Ferro	Armadura de distribuição
N12	4 N3 55,0 c/20 C-61
N12	4 N3 55,0 c/20 C-61
N12	4 N3 55,0 c/20 C-61
N10	13 N4 55,0 c/20 C-480
N11	6 N4 55,0 c/20 C-480
N10	13 N4 55,0 c/20 C-480
N5	3 N6 55,0 c/20 C-97
N5	3 N6 55,0 c/20 C-97
N8	3 N6 55,0 c/20 C-97
N9	4 N6 55,0 c/20 C-97



Relação do apo					
Negativo X					
AÇO	N	DM	QUM	C.UM	C.TOTAL
		(mm)		(cm)	
C450	C450	5,0	3,3	14,0	46,0
	2	3,5	1,2	6,5	31,0
	3	5,0	1,2	6,5	7,2
	4	5,0	3,2	4,8	15,0
	5	5,0	3,2	4,8	10,8
	6	5,0	3,2	4,8	10,8
	7	5,0	3,2	4,8	12,6
	8	5,0	3,2	4,8	12,6
	9	5,0	3,2	4,8	12,6
	10	6,3	5	8,6	5,6
	11	6,3	5	8,6	5,6
	12	6,3	5	8,6	5,6
	13	6,3	5	8,6	5,6
	14	10,0	4	4,0	18,0

ACO	DIAM (mm)	C:TOTAL (m)	PESO (kg)
CASO	6,3	187,6	46
	8,0	10,2	
	10,0	67,1	4
CABO	5,0	236,1	30
PESO TOTAL (kg)			
CASO			91,3
CABO			36,4

Volume de concreto (C-25) = 7,52 m³
 Área de forma = 7,21 m²

[illegible]